

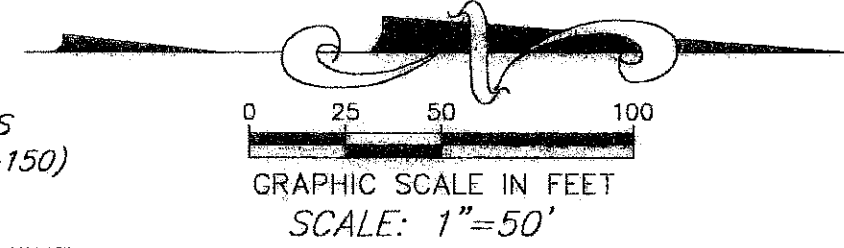
WEST PALM BEACH INTERMODAL TRANSFER FACILITY

A REPLAT OF A PORTION OF BLOCKS 46, 47, 48 AND 49; AND PORTIONS OF THE ADJACENT RIGHT-OF-WAYS AND 14' ALLEYS OF PLAT OF MAP OF THE TOWN OF WEST PALM BEACH, ACCORDING TO THE PLAT THEREOF AS RECORDED IN PLAT BOOK 1, PAGE 2, OF THE PUBLIC RECORDS OF PALM BEACH COUNTY; LYING IN SECTION 21, TOWNSHIP 43 SOUTH, RANGE 43 EAST, IN THE CITY OF WEST PALM BEACH, PALM BEACH COUNTY, FLORIDA

192

LEGEND

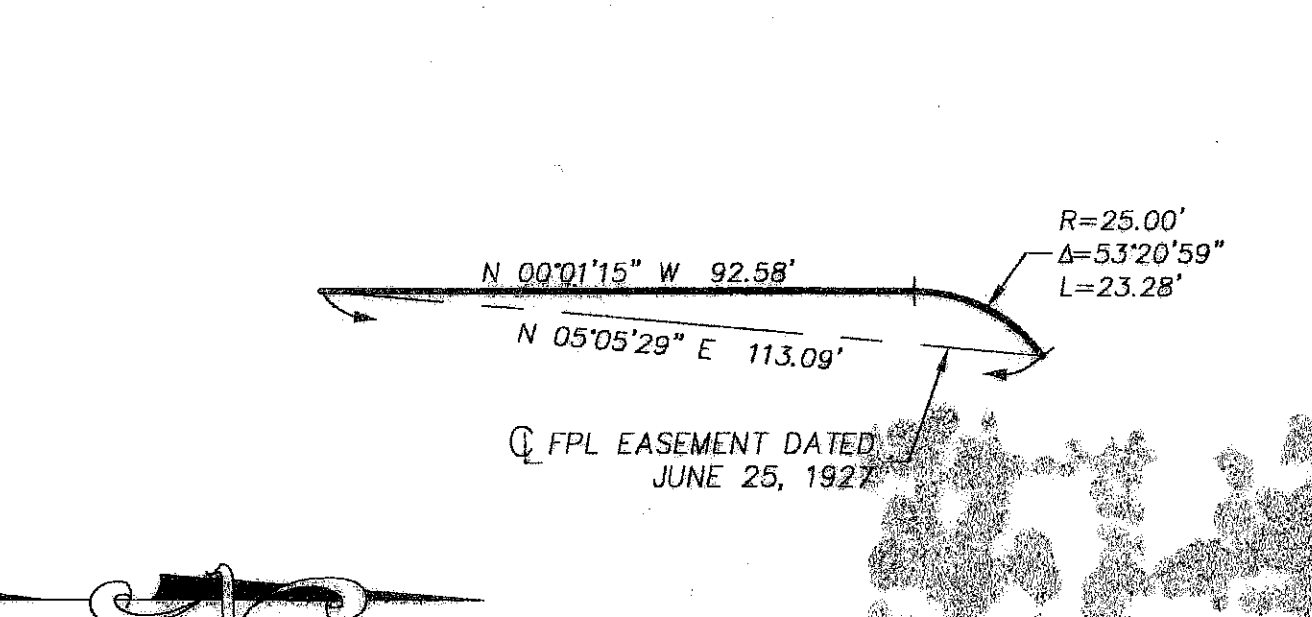
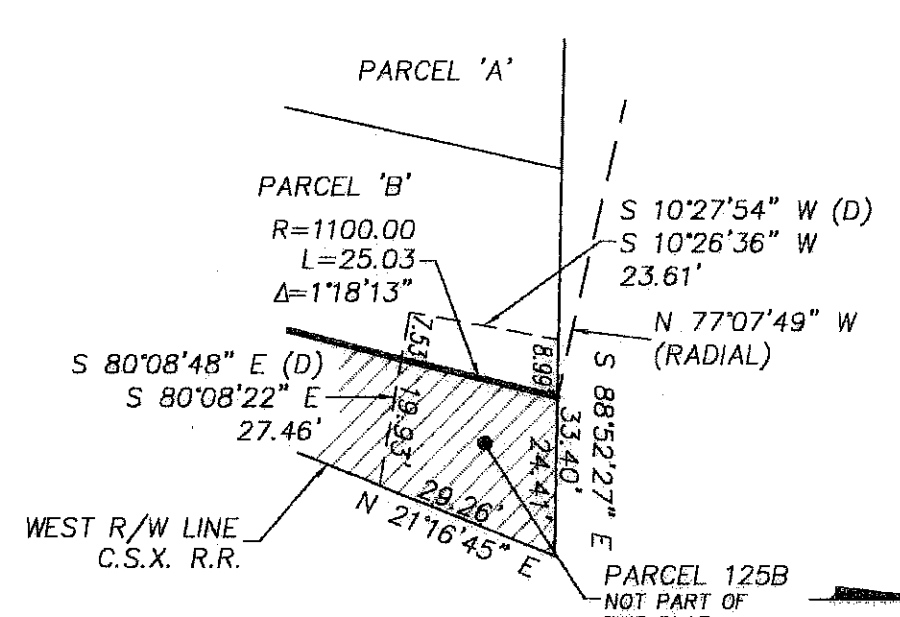
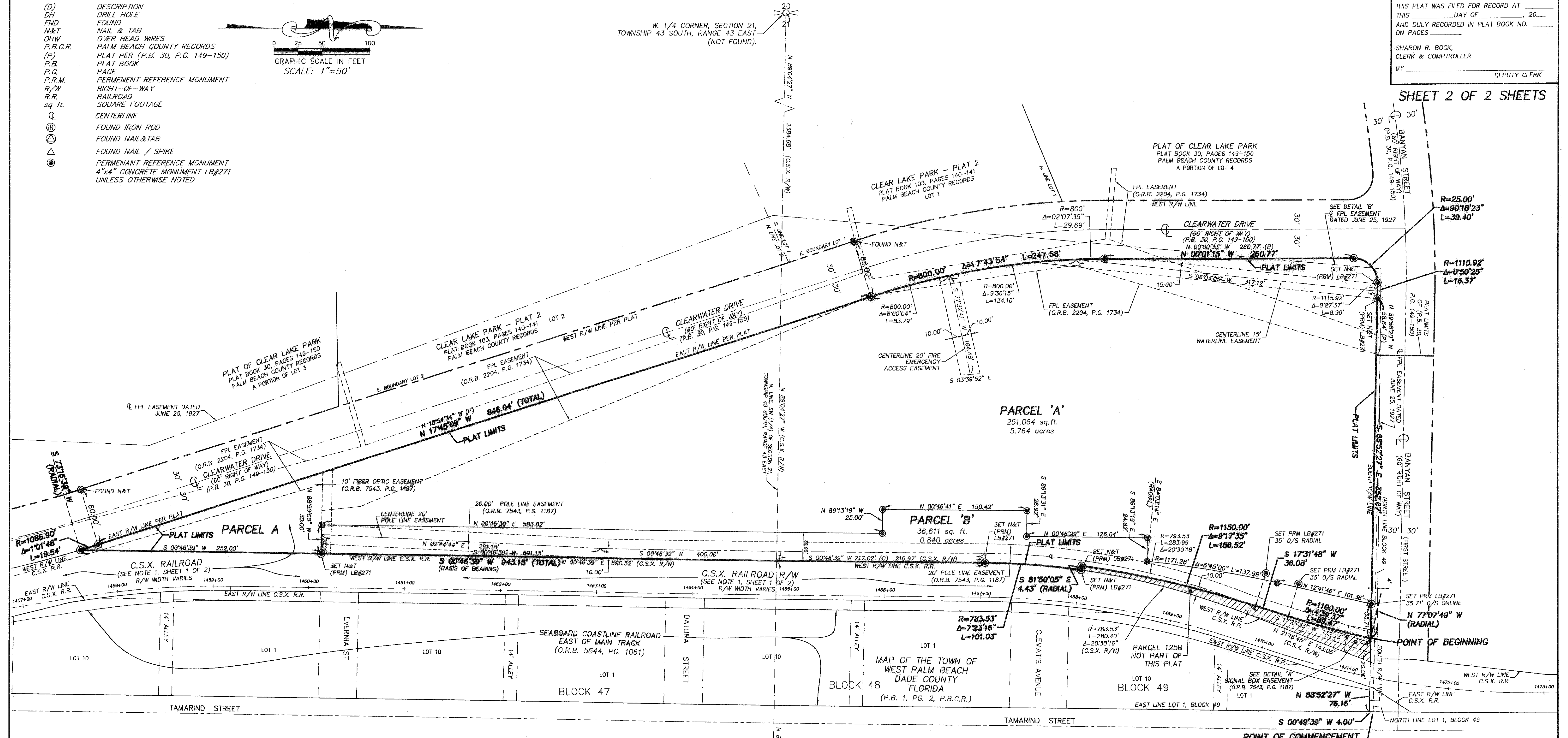
- | | |
|----------|---|
| (D) | DESCRIPTION |
| DH | DRILL HOLE |
| FND | FOUND |
| N&T | NAIL & TAB |
| CHW | OVER HEAD WIRES |
| P.B.C.R. | PALM BEACH COUNTY RECORDS |
| (P) | PLAT PER (P.B. 30, P.G. 149-150) |
| P.B. | PLAT BOOK |
| P.C. | PAGE |
| P.R.M. | PERMANENT REFERENCE MONUMENT |
| R/W | RIGHT-OF-WAY |
| R.R. | RAILROAD |
| sq. ft. | SQUARE FOOTAGE |
| CL | CENTERLINE |
| ⊙ | FOUND IRON ROD |
| ⊙ | FOUND NAIL & TAB |
| ⊙ | FOUND NAIL / SPIKE |
| ⊙ | PERMANENT REFERENCE MONUMENT |
| ⊙ | 4"x4" CONCRETE MONUMENT LB#271 UNLESS OTHERWISE NOTED |



W. 1/4 CORNER, SECTION 21, TOWNSHIP 43 SOUTH, RANGE 43 EAST (NOT FOUND).

STATE OF FLORIDA
COUNTY OF PALM BEACH
THIS PLAT WAS FILED FOR RECORD AT _____
THIS _____ DAY OF _____, 20____
AND DULY RECORDED IN PLAT BOOK NO. _____
ON PAGE _____
SHARON R. BOCK,
CLERK & COMPTROLLER
BY _____
DEPUTY CLERK

SHEET 2 OF 2 SHEETS



E. 1/4 CORNER, SECTION 21, TOWNSHIP 43 SOUTH, RANGE 43 EAST (NOT FOUND).

NOTICE: THIS PLAT, AS RECORDED IN ITS GRAPHIC FORM, IS THE OFFICIAL DEPICTION OF THE SUBDIVIDED LANDS DESCRIBED HEREIN AND WILL IN NO CIRCUMSTANCES BE SUPPLANTED IN AUTHORITY BY ANY OTHER GRAPHIC OR DIGITAL FORM OF THE PLAT. THERE MAY BE ADDITIONAL RESTRICTIONS THAT ARE NOT RECORDED ON THIS PLAT THAT MAY BE FOUND IN THE PUBLIC RECORDS OF THIS COUNTY.

THIS INSTRUMENT WAS PREPARED BY:
NICHOLAS MESSINA JR., P.S.M. #6559 OF
CRAVEN-THOMPSON & ASSOCIATES, INC.
ENGINEERS • PLANNERS • SURVEYORS
3563 N.W. 5360 STREET, FORT LAUDERDALE, FLORIDA 33309
TEL: (954) 738-6400 FAX: (954) 738-6408
APRIL 2007 00-0007